

Applications

- Water supply
- Industry pressure boosting
- Industry liquid transfer
- Water treatment
- Irrigation

Motor

- Fitted with a totally enclosed fan-cooled, 2-pole motor
- Enclosure class: IP55
- Insulation class: F
- Supply voltage: 50Hz or 60Hz

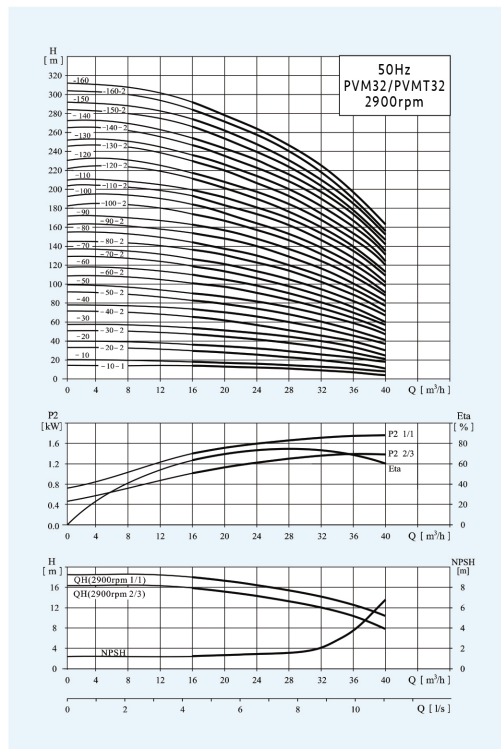
Operation conditions

- Thin, clean, non-explosive liquids, not containing solid particles or fibers liquid
- Liquid temperature: normal temperature type: -15°C~+70°C hot water type: -15°C~+105°C
- Ambient temperature: maximum +40°C
- Altitude: maximum 1000m

Material

- Inlet&outlet chamber: Cast iron/Stainless steel(304/316)
- Impeller: Stainless steel(304/316)
- Shell: Stainless steel(304/316)
- Shaft: Stainless steel(304/316)
- Coupling: Ductile iron
- Bearing: Tungsten carbide
- Mechanical seal: Tungsten carbide/Graphite

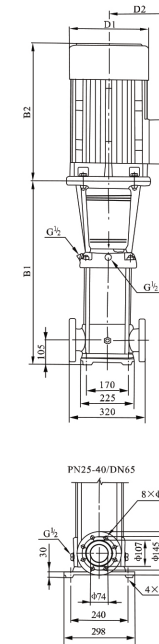
Performance Curves



Performance Table

Model	Associated motor(kw)	Q (m³/h)	H (m)							
			16	20	24	28	32	36	40	
PVM32-10-1	1.5		14	13	12	11	9	7	4	
PVM32-10	2.2		18	17	15	14	13	11	8	
PVM32-20-2	3.0		29	28	26	23	20	16	11	
PVM32-20	4.0		36	34	32	29	27	23	18	
PVM32-30-2	5.5		47	44	41	38	33	28	21	
PVM32-30	5.5		54	51	48	44	40	35	27	
PVM32-40-2	7.5		65	62	58	53	46	40	30	
PVM32-40	7.5		72	69	65	59	53	47	37	
PVM32-50-2	9.2		83	79	74	68	60	52	41	
PVM32-50	9.2		90	86	81	74	67	59	47	
PVM32-60-2	11		101	97	90	83	74	65	51	
PVM32-60	11		108	104	97	90	81	72	57	
PVM32-70-2	15		119	114	107	98	88	78	60	
PVM32-70	15		126	121	113	105	95	85	67	
PVM32-80-2	15		136	131	123	114	102	90	71	
PVM32-80	15		144	138	130	120	109	97	77	

Model	Associated motor(kw)	Q (m³/h)	H (m)							
			16	20	24	28	32	36	40	
PVM32-90-2	18.5		154	148	140	129	117	102	82	
PVM32-90	18.5		162	156	147	136	124	109	88	
PVM32-100-2	18.5		175	166	157	146	131	115	91	
PVM32-100	18.5		182	173	164	152	138	122	98	
PVM32-110-2	22		193	184	173	164	146	128	102	
PVM32-110	22		200	191	180	168	153	135	109	
PVM32-120-2	22		211	201	189	178	160	140	113	
PVM32-120	22		218	208	196	184	167	147	120	
PVM32-130-2	26		230	218	206	193	174	153	124	
PVM32-130	26		237	225	213	200	181	160	131	
PVM32-140-2	26		247	235	222	210	189	165	135	
PVM32-140	30		255	242	229	216	196	172	142	
PVM32-150-2	30		266	253	239	224	203	178	145	
PVM32-150	30		274	260	246	231	210	185	152	
PVM32-160-2	30		284	270	255	240	218	190	156	
PVM32-160	30		292	277	262	246	225	197	163	



Dimension&Weight

Model	Size (mm)					Net Weight (kg)
	B1	B2	B1+B2	D1	D2	
PVM32-10-1/PVM32-10	505	290	795	190	155	64/68
PVM32-20-2/PVM32-20	575	345/355	920/930	197/230	165/180	77/85
PVM32-30-2/PVM32-30	645	390	1035	260	208	100
PVM32-40-2/PVM32-40	715	390	1105	260	208	109
PVM32-50-2/PVM32-50	785	390	1175	260	208	125
PVM32-60-2/PVM32-60	960	500	1460	330	255	185
PVM32-70-2/PVM32-70	1030	500	1530	330	255	199
PVM32-80-2/PVM32-80	1100	500	1600	330	255	203
PVM32-90-2/PVM32-90	1170	550	1720	330	255	222
PVM32-100-2/PVM32-100	1240	550	1790	330	255	227
PVM32-110-2/PVM32-110	1310	575	1885	360	285	272
PVM32-120-2/PVM32-120	1380	575	1955	360	285	276
PVM32-130-2/PVM32-130	1450	575	2025	360	285	293
PVM32-140-2/PVM32-140	1520	575/650	2095/2170	360/400	285/310	298/341
PVM32-150-2/PVM32-150	1590	650	2240	400	310	345
PVM32-160-2/PVM32-160	1660	650	2310	400	310	350